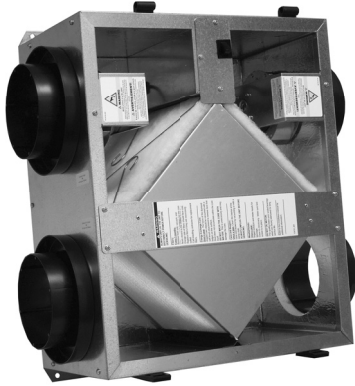


# GR90



## Indoor Unit



## Specifications

|  |    |        |             |      |
|--|----|--------|-------------|------|
| Ventilation Type: Static Plate, Heat and Humidity Transfer         |    |        |             |      |
| Typical Airflow Range: 40-110 CFM                                  |    |        |             |      |
| Unit may be mounted in any orientation                             |    |        |             |      |
| Number Motors: Two motorized impeller blowers                      |    |        |             |      |
| V  | HZ | Phase  | Input Watts | FLA  |
| 120  | 60 | Single | 46 @ 90 CFM | 0.35 |
| Control: Any switched line voltage power supply                    |    |        |             |      |
| Filters: MERV 8, spun polyester media. 7-1/2" x 10-1/2" x 1"       |    |        |             |      |
| Weight: 36 lbs (unit), 41 lbs (in carton)                          |    |        |             |      |
| Shipping Dimensions: 28-1/2" L x 21-1/2" W x 14-3/4" H (in carton) |    |        |             |      |
| Controls: Any switched line voltage power supply                   |    |        |             |      |
| Accessories: Wall Caps<br>Back Draft Dampers                       |    |        |             |      |

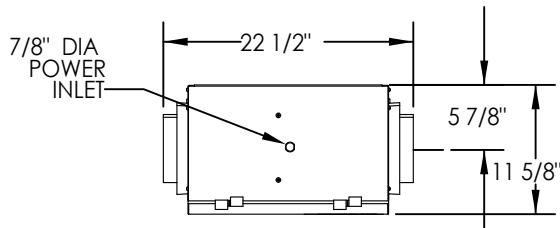
## G5 Performance

| Airflow CFM | ESP in H <sub>2</sub> O | Temp EFF% | Total EFF% Winter/Summer* |
|-------------|-------------------------|-----------|---------------------------|
| 40          | 0.60                    | 84        | 74/56                     |
| 58          | 0.50                    | 80        | 69/50                     |
| 73          | 0.40                    | 77        | 65/46                     |
| 85          | 0.30                    | 74        | 62/43                     |
| 98          | 0.20                    | 71        | 59/39                     |
| 113         | 0.10                    | 68        | 56/34                     |

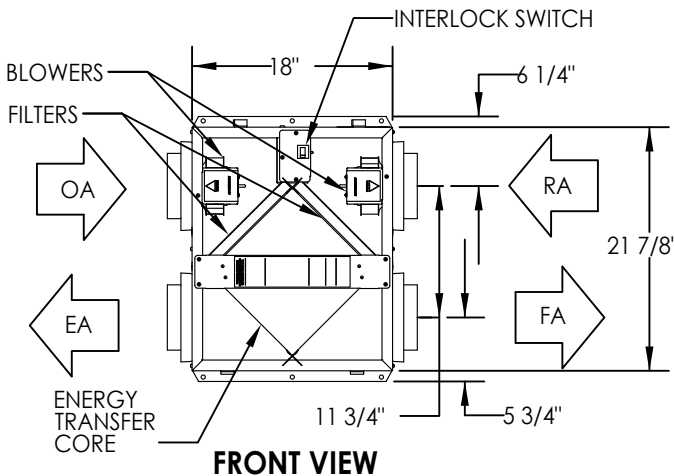
\* (See HVI certification report on page 11 for complete certified rating).

## Dimensions

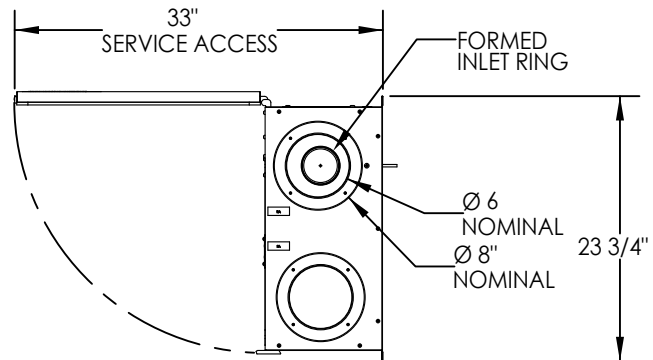
EA: Exhaust Air to outdoors  
 OA: Outdoor Air intake  
 RA: Room Air to be exhausted  
 FA: Fresh Air to inside



TOP VIEW



FRONT VIEW



RIGHT VIEW